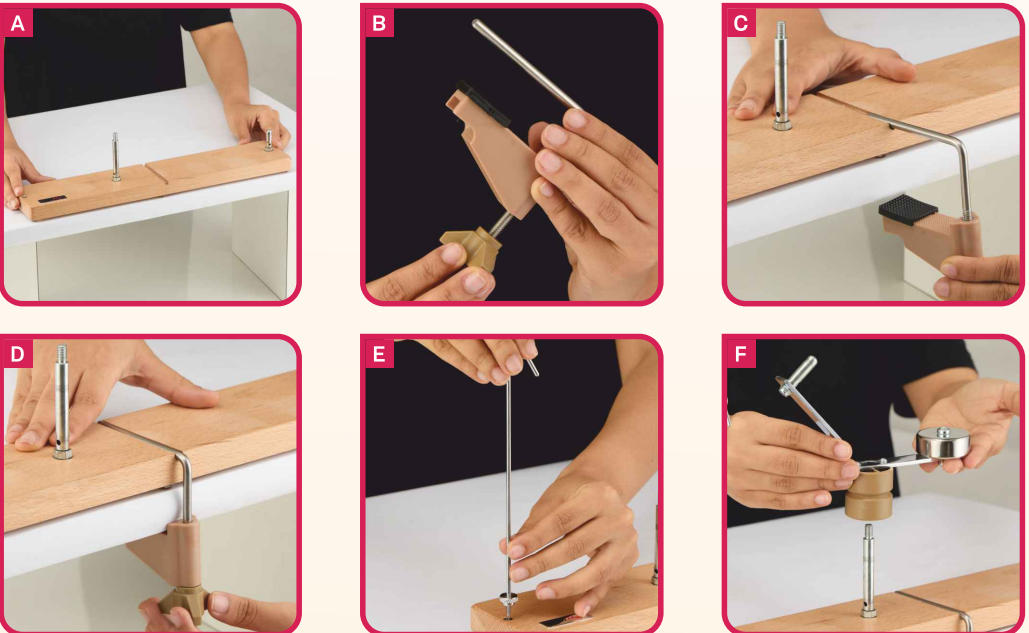


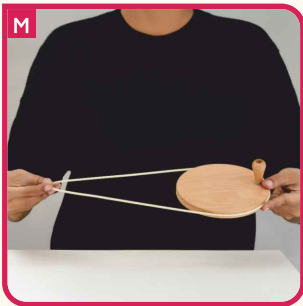
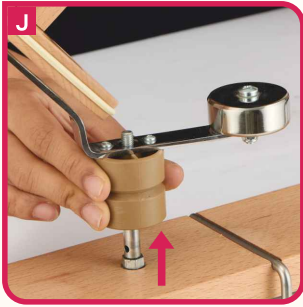
NATURAL MEGA BALL WINDER

CONTENTS



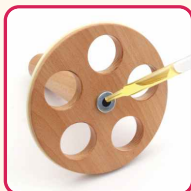
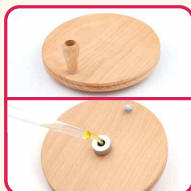
HOW TO ASSEMBLE





Note:

- Please release the Large Band (9) from the Driver Wheel (8) when the ball winder is not in use. This will enhance the life of the band or it may get stretched, causing the winder to slip while winding.
- The yarn should be under a consistent tension, do not wind too quickly.
- Please insert 2-3 drops of sewing machine oil in below components once a month for smooth performance.



How to assemble video

